

Wecock Farm

Big Local

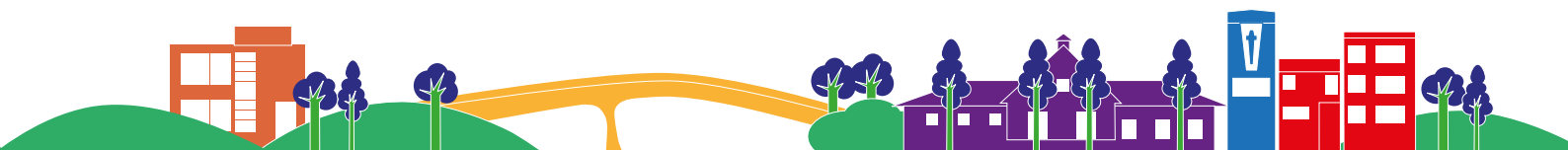
**WHO
ARE BIG
LOCAL?**

**WHAT
DO THEY
DO?**



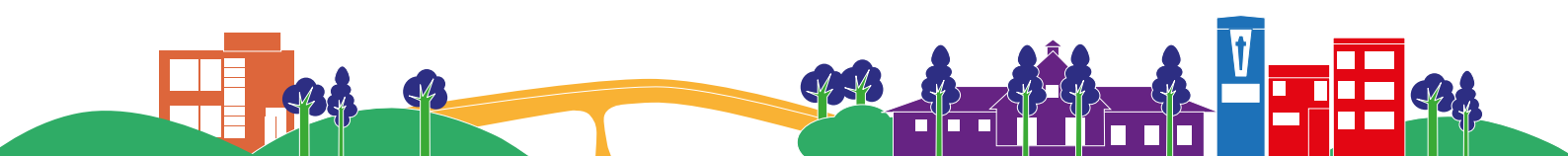
**HOW
CAN PEOPLE
GET
INVOLVED?**

**HOW
DO PEOPLE
MAKE
CONTACT?**



What area does Wecock Farm Big Local serve?

Everything that we do has to benefit people who live, work or play in the area of Wecock Farm outlined in red, as approved by the Big Lottery Fund.



So What is Big Local?

Big Local is an exciting opportunity for residents in 150 areas across England to make a massive, lasting and positive difference to their communities. Big Local is run by the national Local Trust, who are working with £200 million from the Big Lottery Fund. With the help from a range of partners, Local Trust are providing expert advice and support for residents in the selected areas.

Wecock Farm Big Local

WeBigLocal is the shortened name for the Wecock Farm Big Local area, which has been awarded £1 million over ten years to help us, the residents, work together in partnership with other agencies to make a positive and lasting difference to the community.

It's about bringing everyone together, using all our local talent, skills and energy to make the area an even better place to live, not only now but in the future, by helping to improve the health and well-being of all residents.

WeBigLocal will run for 10 Years. In relation to the Big Local timeframe we are currently in Year 3 of the 10 Years and are delivering our 2017-20 Plan. All decisions about the Plan, projects and expenditure are made by the Partnership Board.

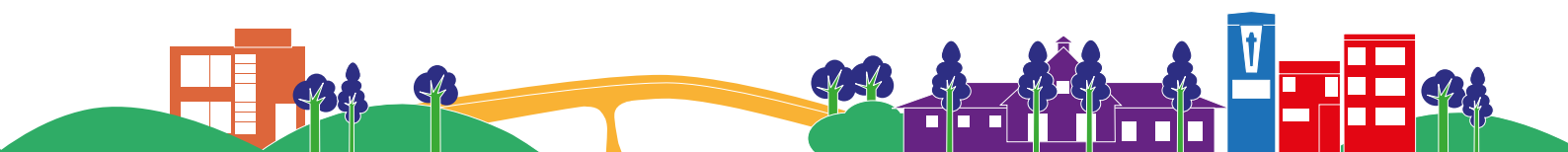
Partnership Board Membership

- A maximum of 12 voting members and a minimum of 8. At least 8 (Residents) with voting rights, making up at least 51% of the Board.
- Advisory Members from stakeholders such as Havant Borough Council and Portsmouth City Council, the Local Trusted Organisation (Fund Holders) and the Big Local Big Local Representative. All of these people do not have voting rights.
- Sub Groups
 - Events
 - Finance and Governance
 - Young People
 - Communications
 - Environment (to be developed)

(Formal Partnership Membership is not required to be an active member of these Sub Groups)

Our Vision & Priorities

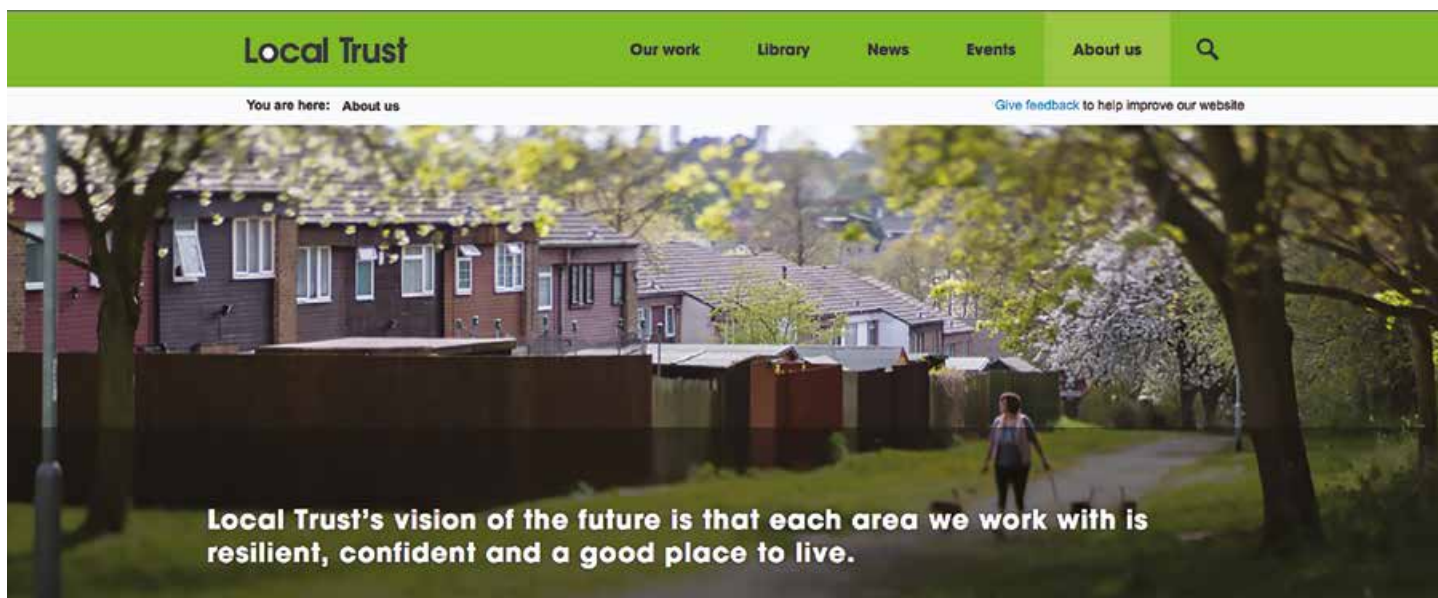
To live in a happy thriving community with opportunities for all. Enabling residents to get involved, engage with their community and make a difference to their lives. To embed healthy living into the community and nurture mental wellbeing for the benefit of everyone, not only now but for future generations to come.



WHY NOT JOIN US

- Help to steer the Wecock Farm Big Local Plan forward and put it into action
- Be a resident voice on the core groups running the project
- Help your community by planning and delivering local projects and events
- Be involved in a national programme making a difference

For more information about the Local Trust / Big Local programme go to www.localtrust.org.uk/about-us



Find out more about Wecock Farm Big Local by getting in touch

Local Trust | Big Local

