



WeBigLocal

The Local Plan

2014 - 2016



**We want to live in a
happy thriving community
with opportunities for all**

WeBigLocal Plan

Contents

Part A: About Us

Forward By WeBigLocal Group	Page 3
Introduction.....	Page 3
Our area.....	Page 4
Talking to residents.....	Page 5

Part B: WeBigLocal Activities

Our Vision.....	Page 6
Our Priorities	Page 6
Focus Tables:	
Children and Young People.....	Page 7
Building the Wecock Community.....	Page 8
Environment and Facilities.....	Page 9
Opportunities for Residents.....	Page 10
Older Residents.....	Page 11
Action Plan for Year One and Two.....	Pages 12-13
Project Delivery.....	Page 14
Monitoring and Evaluation.....	Page 14

Part C: The Nuts and Bolts

The Financial Breakdown	Pages 15-16
The WeBigLocal Group.....	Page 17
Contact Details.....	Page 18

Forward from the WeBigLocal Group



Hi!

You may recognise some of the faces in the picture on the left! We are your WeBigLocal Board. We are all members of the Wecock Farm Community. Most live here and some of us work, volunteer or simply spend our time in the area.

We have been meeting up for over a year, coming up with various activities and events to support the community and asking you how you think we should use our £1 million! We have listened!

This plan has come together from all the thoughts, suggestions and observations you, the Wecock Farm Community, have made. We've had fun, and perhaps a few late nights, working out how to combine many of your ideas in to projects that will make our area an even better place to live.

The next few years are going to be exciting times for Wecock! We can't wait to get going with some new and fantastic projects. We hope that we can inspire you to join in , get involved and have a say!

Best wishes from your WeBigLocal Board Members.

*Andrews Caroline Barker Attwood
Jo Alebury S. Baker M. O'Connor Sean
ROBERT BARKER Helen Clark*

What is WeBigLocal?

WeBigLocal is the name for Wecock Farm Big Local area, which has been awarded £1 million over ten years to help us, the residents, work together in partnership with other agencies to make a positive and lasting difference to our community.

It's about bringing everyone together, using all of our talents, skills and energy to make the area an even better place to live not only now, but in the future, by helping to improve the health and well-being of all residents along with the image and reputation of the area.



Our Area

Wecock Farm can be traced back to the 16th Century. Wecock had always been a woodland and farming area, providing a haven for wildlife and plants alike. In the 1970's the housing development, 'Wecock Farm Estate' and school were built on part of Woodcroft Farm by Portsmouth City Council to meet the needs of the ever increasing population in the city. The village centre was redeveloped in 2003 with new housing and community facilities. Unusually, Wecock Farm is served by three local authorities; Hampshire County Council, Havant Borough Council and Portsmouth City Council. Land Ownership and responsibilities for ground maintenance and play areas is shared and can be very confusing for residents.



Wecock Farm has one main road running through it. Passing along this route, the estate looks built up and grey, but is in fact surrounded and entwined with plenty of historical woodland and open spaces. The disadvantage of having just one main artery is that residents have no reason to go to other areas that branch off, and therefore, know little about the estate other than where they live.



Over a third of housing on Wecock Farm is owned by Portsmouth City Council along with a number of other housing agencies and privately owned properties including some sheltered housing accommodation. Although there is a mix of property types there is a high proportion of one bedroom flats.



The estate is two miles from the local town, Waterlooville, and has excellent bus services which are needed for many residents to access the larger shops as there is only one convenience store and one take-away on the estate. Transport links are important in terms of employment as there are very few employment opportunities directly on the estate.

There are no health services provided on the estate but there is a doctor's surgery just on the outskirts. There is a lack of services for issues like mental health, substance misuse and family welfare which are known problems in the area.

At the heart of Wecock Farm there is a Links Children Centre, Portsmouth Housing Office, Living Waters Church (which also runs a food bank) and a Community Centre with its adjoining Motiv8 Youth Hub and Squirrels Pre-School. These facilities and agencies provide fitness groups, various activities and support to residents, working together in partnership to look at how they can best serve the community. However due to lack of funding and resources, these vital services can be restricted as to what they can deliver.

Talking to Residents

Since April 2013 WeBigLocal have held events, attended many community activities, visited schools and chatted with residents. Opinions have been gathered from the community on how to enhance the quality of health and well-being in the area.

Community Chest

WeBigLocal decided to hold three community chest events offering a total of £4,000 to individuals and groups who had ideas which would benefit Wecock residents, with a maximum of £300 for a single project. The Community Chest brought the community together and allowed residents to vote for the projects they wished to fund—offering the community a chance to really get involved. This gave us information on which projects residents really want to support.

Photography Exhibition

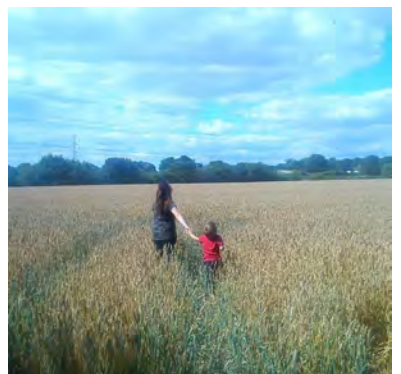
WeBigLocal asked residents to capture what they loved about Wecock Farm. We were inundated with responses - of beautiful photos which told a story about the estate. We used these images as part of our Community Profile.

Community Profile and Film

As a group WeBigLocal produced an eye-catching and informative profile alongside an eight minute documentary about the estate. The profiling was a great opportunity for the residents to have their say—particularly on camera! We delivered a profile through every door on the estate over 1700 properties so that everyone was aware of the WeBigLocal project and its purpose.

Film Premiere Event

WeBigLocal invited the community to its first showing of the documentary film, holding a fun and interactive event. Residents were given the opportunity to give suggestions on how the money should be spent through various means including a Wecock Boulevard of Fame!



Our Vision

To live in a happy **thriving community** with **opportunities** for all. Enabling residents to get involved, engage with their community and to make a difference to their lives. To embed **healthy living** into the community, nurture mental well being for the benefit of everyone, not only now, but for future generations to come.

Our Priorities

WeBigLocal have been consulting with residents for over a year. Through all the suggestions and observations that have been voiced, the five clear themes which we have identified as our 'priorities' to support going forward are:

Children and Young People

We want to improve facilities for children and young people, developing recreational activities, supporting education and learning and providing opportunities for volunteering and work placements. We want children and young people to have more active, healthier and positive lifestyles.

Older People

We know there are a large proportion of the older population on the estate living alone and feeling isolated. We want to provide activities which support the needs of older people and look at transport issues which may prevent them attending. We want to provide intergenerational activities and events to bridge the gap between the young and the old to make them feel more engaged and supported in their community.

Building the Wecock Community

The community want more open access to facilities which are currently closed during the evening and weekends. We want to support more clubs and activities at times to suit residents as well as providing advice on social, educational and financial issues. We want to provide information and advice on how to tackle isolation and ensure the community has an ongoing involvement in decision making. We will work with the councils to research the area, as statistical information does not accurately reflect Wecock Farm. A better analysis would help us support the community. The community will be improved, more active and sustainable.

Environment and Facilities

WeBigLocal want to work with local councils and other organisations to improve facilities around the estate and develop the use of open spaces. We are keen to have a better understanding of the transport needs of residents to ensure they respond to the leisure and recreational needs of the community.

Opportunities for Residents

WeBigLocal wants to support the community in achieving a healthier lifestyle. We want to offer opportunities for learning new skills and training as well as supporting residents with social enterprise projects. Wecock Farm has a very low business community, our aim is to build relationships with local businesses in and around the area in ways which can benefit everyone. Residents will have access to improve their skills and life chances to secure employment.

Focus Table

Priority: Children and Young People

Current Situation	Action	Vision
Lack of recreational activities	<ul style="list-style-type: none"> • Work with Community Centre and other organisations to develop a Calendar of Activities for youth. • Develop a programme of family events eg. disco, family nights or talent shows • Research to better understand the leisure and recreational needs of the entire communitiy • Apply for funding to develop open space 	<ul style="list-style-type: none"> • To give youth on the estate positive and constructive activities supported by responsible adults . We want to encourage youths to work and play together and develop a positive mental attitude. • To develop open and recreational space for the entire community ensuring youth are essentially involved in the design process.
Low educational attainment levels	<ul style="list-style-type: none"> • Develop a homework club and mentoring scheme • Support the development of fun educational sessions 	<ul style="list-style-type: none"> • To provide youth with a positive, focused environment to talk and learn. • To inspire youth to look at learning in a new and thought provoking way.
Lack of volunteering and placement opportunities	<ul style="list-style-type: none"> • Develop a bike and skate repair workshop. Offering training and volunteering opportunities for young people. • Form an outdoor maintenance group to provide garden maintenance and window cleaning work opportunities in and around the estate. • Support the Youth to bid for the Community Chest funding. Explore the development of a Youth Community Chest. 	<ul style="list-style-type: none"> • To give youth the opportunity to learn new skills , gain qualifications and volunteering experience. To develop a social enterprise and generate an income for their community or, with support, create a job opportunity for themselves • For youth to be proactive and creating opportunities for themselves and engage with their community.
Poor healthy eating and healthy living	<ul style="list-style-type: none"> • Provide fun cookery workshops • Develop outdoor activities to encourage exercise 	<ul style="list-style-type: none"> • For youth to enjoy a healthier lifestyle which they can pass on to their own families.

Focus Table

Priority: Building the Wecock Community

Current Situation	Action	Vision
Lack of clubs and activities at times to suit all residents	<ul style="list-style-type: none"> • Work with the Community Centre and other organisations to develop a calendar of activities to include evening and weekend activities 	<ul style="list-style-type: none"> • The Community Centre to be accessible and cater for all members of the community .
Lack of support and advice on social, educational and financial issues	<ul style="list-style-type: none"> • To develop a programme of support to be made available to the community through partnership working. 	<ul style="list-style-type: none"> • To address ‘taboo’ issues on the estate and support the community to manage or resolve any concerns which affect their lives
Isolation on the estate	<ul style="list-style-type: none"> • Evaluate transport related issues • Work with organisations to identify and address anti-social behaviour and bullying • Work with organisations who support vulnerable adults to offer suitable opportunities to engage within their community 	<ul style="list-style-type: none"> • To be accessible and cater for all members of the community. • To create an environment where residents feel safe and included
Lack of involvement in decision making	<ul style="list-style-type: none"> • Invite residents to observe WeBigLocal Board meetings • Hold quarterly Community Forums to update and consult with residents • Use interactive forms of media to communicate with residents 	<ul style="list-style-type: none"> • For more members of the community to get involved with WeBigLocal and be part of the decision making process.
Lack of statistical data and research information about Wecock Farm Estate which could better identify issues that need addressing	<ul style="list-style-type: none"> • Work with the Councils to identify relevant statistics to correctly represent Wecock Farm. 	<ul style="list-style-type: none"> • To develop a greater understanding of the needs of residents and to use data to support funding applications.

Focus Table

Priority: Environment and Facilities

Current Situation	Action	Vision
<p>Few facilities for the community and/or lack of resources to expand and develop</p>	<ul style="list-style-type: none"> • Work with organisations to identify needs. • Build projects around existing facilities to support them to develop/expand and generate their own income • Provide a bank of volunteers to assist with community activities. 	<ul style="list-style-type: none"> • To be accessible and cater for all members of the community . • To support organisations to expand and/or develop, providing them with resources to meet the needs of their community in a more sustainable way.
<p>A community with lots of open space but a lack of leisure facilities</p>	<ul style="list-style-type: none"> • To promote the use of existing play and leisure areas • To work with youth organisations and the police to reduce bullying and intimidation in open spaces • To explore activities which support parent involvement. • To develop open space where needed • To encourage other forms of outdoor play and leisure. 	<ul style="list-style-type: none"> • For outdoor space to become an extension of the community which is embraced by all generations. • To support youth in working and playing together to create a safe and positive environment. • To support family engagement.
<p>Gaps in the provision in transport particularly for older people</p>	<ul style="list-style-type: none"> • Evaluate transport related issues • Work with Community organisations to meet the gaps in current transport provision. • Promote trips to reduce isolation 	<ul style="list-style-type: none"> • To reduce isolation on the estate and encourage community participation.

Focus Table

Priority: Opportunities for Residents

Current Situation	Action	Vision
A lack of healthy living on the estate	<ul style="list-style-type: none"> • Work with organisations in promoting healthy living • Offer activities that encourage a healthier lifestyle to include cookery workshops, and activities that support fitness. 	<ul style="list-style-type: none"> • For healthy living to be embedded in the estate . With families enjoying regular meal times together and active leisure time.
Lack of resources to deliver skills and training opportunities	<ul style="list-style-type: none"> • Identify and promote existing opportunities and support residents to engage in learning. • To provide new opportunities to learn new skills and build confidence through workshops and taster sessions • Provide training for residents which compliments WeBigLocal projects 	<ul style="list-style-type: none"> • For more residents to obtain new skills and qualifications while also gaining in confidence and belief in their own ability. • For residents to use new skills and training to support WeBigLocal, be part of future social enterprise projects or gain employment.
Lack of employment opportunities within Wecock Farm	<ul style="list-style-type: none"> • To develop social enterprises eg. Bike/Skate repair shop and outdoor maintenance, which offers residents the opportunity to gain volunteering experience, learn new skills and gain new qualifications to support entry in to employment. 	<ul style="list-style-type: none"> • To develop social enterprises which offers residents the opportunity to learn new skills, gain qualifications, supports entry in to employment and generates an income to feed back in to the Community, offering a sustainable fund.
Minimal relationships with local businesses.	<ul style="list-style-type: none"> • Build relationships with local businesses who may be able to support WeBigLocal through volunteering, resources and/or funding. • Make residents aware of employment opportunities, including new local commercial developments, and support them in applying for vacancies. 	<ul style="list-style-type: none"> • To integrate local businesses in to the lives of residents. For local companies to gain from working with the Wecock Farm Community, and vice versa. • For residents to be aware of all local employment opportunities.

Focus Table

Priority: Older People

Current Situation	Action	Vision
<p>Limited activities for older people.</p>	<ul style="list-style-type: none"> • Work with organisations and the police to promote current activities to older residents. • Provide additional activities which appeal to older residents 	<ul style="list-style-type: none"> • For the older generation to feel engaged with and supported. To ensure those most isolated have the opportunity to be a part of their community.
<p>Public transport does not address the needs of older people.</p>	<ul style="list-style-type: none"> • To consult with vulnerable elderly residents as to their transport needs. • To work with community organisations to deliver community transport where needed • To organise and promote outings to reduce isolation. 	<ul style="list-style-type: none"> • To break down barriers, and for older people to be fully engaged within the community.
<p>Poor relationship between the older people and young people</p>	<ul style="list-style-type: none"> • To promote activities which are intergenerational. • To develop projects which appeal to both the young and old alike. 	<ul style="list-style-type: none"> • To bring generations together. To learn from each other, respect each other and feel valued. • For the older generation to feel safer in their community.

Action Plan for Year One and Two

Project	Summary	Year
Calendar of Activities for all	<ul style="list-style-type: none"> • To promote existing activities and offer additional workshops, social events, family activities, training opportunities and support to assist facilities to become self-sustaining • To support the Acorn Centre to open more in the evenings and at weekends • Hold regular Community events - in and outdoor. • Hold an initial activity 'taster' afternoon to introduce new activities to residents • Offer workshops and training opportunities including a youth film workshop to support project evaluation. • Work with organisations and schools to develop an inspiring and positive after-school club. • Work with organisations who can support residents with debt advice, mental health concerns, substance misuse and other identified issues which may benefit the community. • To make at least three funding applications to run workshops 	<p>Year 1</p> <p>Year 1-2</p> <p>Year 1</p>
Community Gardening	<ul style="list-style-type: none"> • To hold a community 'planting bulb event' along Eagle Avenue, the main route through Wecock Farm. • To promote and develop a gardening club for all generations which will meet monthly • To engage with local businesses to provide resources to the gardening group • To arrange a trip to visit a National Trust gardens to inspire residents • To hold a Wecock in Bloom event summer 2015 to promote pride in the community. • To support residents to gain a qualification in gardening to support employment opportunities 	<p>Year 1</p> <p>Year 1-2</p>
Outdoor Maintenance Social Enterprise	<ul style="list-style-type: none"> • To establish an outdoor maintenance social enterprise, encouraging residents to learn new skills, gain qualifications and support them into employment. • Expand the local job club to support residents • Apply for funds to support social enterprise and assist residents to apply for individual business/ enterprise grants eg. Star People 	<p>Year 2</p> <p>Year 1-2</p> <p>Year 1-2</p>

Action Plan for Year One and Two Continued...

Project	Summary	Year
Re-cycle and bike/skate repair workshop	<ul style="list-style-type: none"> To develop existing workshops to provide frequent bike and skate repairs, develop a workshop and use of a roaming vehicle to visit play areas on the estate. Encourage residents able to make repairs to volunteer their time and pass their knowledge on to other residents. Work with residents , offering training to build a social enterprise to up-cycle donated bikes and skates, offering a purchase or hire service. 	Year 1 Year 2
Open Space Consultation	<ul style="list-style-type: none"> Consult with children and young people in the community where they play and inspire them to get involved. Research to better understand the leisure and recreational needs of the community using external support to assist with an open space strategy. Apply for additional funding to develop open space. 	Year 1 Year 1 Year 1
Community Chest	<ul style="list-style-type: none"> Make funding available for groups and individuals who wish to make a difference within the community and help us deliver our plan. Hold four events over the year Theme each funding round to address the needs on the estate as required to include a round focused on Youth involvement. 	Year 1
Dog/Owner training and support	<ul style="list-style-type: none"> Work with canine organisations to provide free tags and other useful resources for dog owners Work with schools to develop signage as a way to communicate with dog owners. Raise awareness and promote use of dog bins Lobby for more dog bins where needed Provide dog training courses Hold a fun and informative dog event Litter Pick and meet and greet dog owners in the community 	Year 1 Year 1 -2

Financial Breakdown for Years One and Two

Description	Expenditure	
	Year 1	Year 2
Staff Costs		
Community Development Worker (20hr per Week)	£ 13,950.00	£ 13,950.00
Administrative Worker (16hrs per week)	£ 8,346.24	£ 8,346.24
Office rental	£ 2,268.00	£ 2,268.00
Meeting room hire x 12	£ 172.00	£ 172.00
Office resources	£ 1,500.00	£ 1,000.00
Staff resources	£ 700.00	£ 700.00
Marketing		
Text Marketing	£ 200.00	£ 200.00
Banners x6	£ 300.00	£ 300.00
Flyers	£ 250.00	£ 250.00
Marketing Materials	£ 500.00	£ 500.00
Promotional T-shirts and caps	£ 300.00	£ 300.00
Website	£ 60.00	£ 60.00
Video Camera and equipment	£ 800.00	£ 200.00
Training		
Partnership Board development	£ 1,000.00	£ 1,000.00
Board Member/Volunteer training	£ 1,000.00	£ 1,000.00
Staff Training	£ 500.00	£ 500.00
External Skills		
External support for projects	£ 5,000.00	£ 5,000.00
Calander of Activities		
Room Hire	£ 5,500.00	£ 4,125.00
Activities x 4 per week x 50 weeks@£100 per activity	£ 20,000.00	£ 15,000.00
Community Events x5 @ £500	£ 2,500.00	£ 2,500.00
Community Gardening		
Storage	£ 5,000.00	£ 1,000.00
Equipment	£ 1,000.00	£ 500.00
Bulb event - resources, refreshments	£ 500.00	£ 500.00
Trip to Exbury Gardens for 30 residents	£ 800.00	£ 800.00
Wecock in Bloom	£ 500.00	£ 500.00
Outdoor Maintenance		
Training and Qualifications for 30 residents		£ 2,500.00
Equipment		£ 500.00
Materials		£ 5,000.00
Logo clothing		£ 200.00
Transport		£ 500.00

Financial Breakdown for Years One and Two Continued...

Bike/Skate Repair Workshop		
Roaming Vehicle 12x£50	£ 600.00	
Permenant Outbuilding		£ 5,000.00
Gazebo	£ 150.00	
Materials	£ 2,000.00	£ 750.00
Chairs	£ 50.00	
Skate Sessions 20 residents x 6 sessions x £10	£ 1,200.00	
Training for 15 residents	£ 600.00	
Dog/Owner Training		
Litter Pick equipment and refreshments	£ 200.00	£ 200.00
Dog Bins	£ 350.00	
Dog training (20 residents x 6 sessions@£7ph)	£ 850.00	
Dog Event	£ 300.00	
Community Chest		
Room Hire x4 events	£ 300.00	£ 300.00
Refreshments	£ 300.00	£ 300.00
Funding to Distribute x4 events	£ 10,000.00	£ 10,000.00
Monitoring and Evaluation Costs	£ 1,000.00	£ 1,000.00
Contingency	£ 9,453.76	£ 13,078.76
Totals	£ 100,000.00	£ 100,000.00

Project Delivery

In June 2014 WeBigLocal formalised it's first board, who have been appointed to steer the projects and ensure the plan and the overall vision is followed. The board meets once a month to discuss and shape the progress of the plan.

The delivery of this plan is the responsibility of the WeBigLocal Board. A series of sub-groups will be formed around the five priorities. In year one we will co-ordinate and develop each project working with WeBigLocal Board members, partners and residents.

At the end of year one we will develop an external funding plan to grow our one million and offer more opportunities.



Monitoring and Evaluation

As projects progress we will develop a monitoring and evaluation approach that records key outputs and outcomes. We will do this using a variety of different methods and approaches including:

- Use of Video, creating short films and blogs
- Social Media
- Surveys and Questionnaires
- Feedback Forms
- Case Studies
- Stories

The WeBigLocal Group

Voting Members



Caroline Hellier

Resident
WBL Chair



Sharon Dickson

Resident
WBL Secretary



Sean Nye

Resident
Spokesperson for
the WBL Communications
Sub-group



Bob Barker

Resident
Spokesperson for
the WBL Finance
Sub-group



Darren Pratt

Resident



Ann Waters

Resident
Chair of Trustees,
Acorn Centre



Fred Monck

Volunteer,
Portsmouth City
Council



Dom Hodgson

Resident



Karen Clark

Community Life
Champion,
ASDA



Margaret O'Connor

Resident



Jo Alesbury

Service Co-ordinator,
Action for Children

Non-voting Members



Gerry Shimbart

Councillor,
Hart Plain Ward



Laura Bevis

Community Officer,
Havant Borough
Council



Richard Shaw

Resident Participation
Officer,
Portsmouth City
Council

Contact Details



Michelle Wilding, WeBigLocal Community Development Worker

Email: info@webiglocal.org

Mobile: 07799 903625

Address:

WeBigLocal
c/o The Acorn Centre
3 The Kestrels
Wecock Farm
Waterlooville
Hampshire
PO8 9UU

Website: www.webiglocal.org

Facebook: www.facebook.com/webiglocal

WeBigLocal Support



Community First HEH is our locally trusted organisation. They are the organisation nominated and endorsed by people in the WeBigLocal group to administer and account for funding.



Fran Davies is our Big Local Rep. He provides WeBigLocal with guidance, support and challenges us appropriately as a group on our Big Local journey. He helps to make sure our partnership is in place, that there is a clear plan and that the plan is delivered.

Thank you to everyone that supports WeBigLocal to achieve it's goal.

